



Plastic Trends
Injection **molded**
fittings have
Triple
Certification
listing



PVC Solvent Weld Sewer Fittings SDR 35 Injection Molded in Sizes 3" - 12" (Fabricated in Sizes 10" - 24")

Features

- Safe for the Most Demanding Environments
- Tough for the Harshesht Work Sites
- Quick and Easy Installation

Plastic Trends has the broadest product offering of Solvent Weld sewer fittings in the industry. Conform to all municipal, federal, and military requirements. They are tested for joint tightness, internal stress and dimensional stability. The "P" Series is engineered for the harsh environment of construction shipping, handling and installation.

Square X™ Countersunk Threaded Plug

SquareX™ is a major advance in countersunk threaded plug design. It features a unique molded-in shape and installs in seconds. Two standard screwdrivers provide plenty of leverage to tighten or loosen the plug. PVC threaded plugs are notorious for being difficult to remove and are often destroyed in the process. SquareX significantly improves the removal process and reduces the potential for breakage.

FlushMount™ Downspout Adapters

FlushMount™ lets you install pipe right up against the wall. They connect a downspout to either a smooth wall sewer pipe or corrugated drain pipe. Available in 3", 4" and 6" sizes.

Certifications

Plastic Trends Solvent Weld sewer fittings are third party tested and listed by NSF, UPC, and CSA to meet specifications defined in ASTM D3034 & CSA B181.2.



Square X™ countersunk threaded plug improves the removal process and reduces the potential for breakage.

PVC Solvent Weld Sewer Fittings SDR 35

Injection Molded in sizes 3" – 12"

(Fabricated in sizes 10" - 24")

Short Form Specifications

4" through 12" injection molded solvent weld SDR 35 sewer fittings shall be manufactured in accordance with ASTM D 3034 and CSA B182.2. They shall be molded from virgin PVC compound having a minimum cell classification of 12454-B in accordance with, and certified by the National Sanitation Foundation (NSF), to meet ASTM D 1784. Solvent weld SDR 35 sewer fittings shall be certified by the National Sanitation Foundation (NSF) to meet ASTM D 3034 and, in applicable configurations by the International Association of Plumbing and Municipal Officials (IAPMO) to meet ASTM D 3034, and by the Canadian Standards Association (CSA) to meet CSA B182.2.



Triple Certified Listing



Plastic Trends, Inc.
56400 Mound Road
Shelby Twp., MI 48316
586.781.2700 • 800.232.5690
Fax: 586.781.0888
www.plasticrends.com



Royal Group Technologies

Configurations Available



TEE
HxHxH



TEE
HxSxH



2-WAY CLEANOUT
HxHxH



2-WAY CLEANOUT
HxHxDWV H



CLEANOUT TEE
HxHxFIPT



SANITARY TEE
HxHxH



SANITARY TEE
HxSxH



WYE
HxHxH



WYE
HxSxH



DOUBLE WYE
HxHxHxH



DOUBLE WYE
HxSxHxH



COMBO WYE & 1/8 BEND
HxHxH



1/4 BEND LONG TURN
HxH



1/4 BEND LONG TURN
HxS



1/4 BEND
HxH



1/4 BEND
HxS



1/8 BEND
HxH



1/8 BEND
HxS



1/16 BEND
HxH



1/16 BEND
HxS



CONCENTRIC
REDUCER COUPLING
HxH



CONCENTRIC
REDUCER BUSHING
SxH



COUPLING
HxH



CAP
H



THREADED PLUG
MIPT



COUNTERSUNK PLUG
MIPT



MALE ADAPTER
HxMIPT



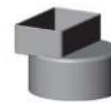
FEMALE ADAPTER
HxFIPT



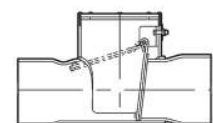
FITTING CLEANOUT ADAPTER
SxFIPT



DRAIN
GRATE

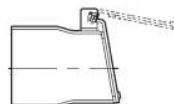


DOWNSPOUT ADAPTER
FLUSH MOUNT



IN-LINE BACKWATER VALVE
HxH

TERMINAL
BACKWATER VALVE
HxH



For additional configurations, list prices and dimensional drawings visit www.plasticrends.com