





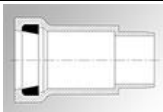




# HARCO PRICE LIST

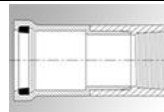
## PVC Gasketed Fittings for PVC IPS Pressure Pipe

### GASKET x SPIGOT ADAPTER (G x S)



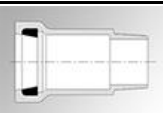
SIZE	PART NUMBER	CTN QTY	CTN WT	STYLE	PRICE
1½	130-015	12	4	M	\$26.78
2	130-020	12	6	M	\$27.27
2½	130-025	12	9	M	\$31.14
3	130-030	12	13	M	\$38.47
4	130-040	1	2	M	\$68.70
5	130-050	1	3	M	\$100.30
6	130-060	1	4	M	\$100.30

### GASKET x FEMALE NPT ADAPTER (G x FNPT)



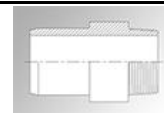
SIZE	PART NUMBER	CTN QTY	CTN WT	STYLE	PRICE
1½	132-015	1	0.5	Fab	\$28.32
2	132-020	1	0.7	Fab	\$31.14
2½	132-025	1	1.2	Fab	\$39.92
3	132-030	1	1.5	Fab	\$58.40
4	132-040	1	3	Fab	\$76.93
5	132-050	1	5	Fab	\$146.07
6	132-060	1	6	Fab	\$211.27

### GASKET x MALE NPT ADAPTER (G x MNPT)



SIZE	PART NUMBER	CTN QTY	CTN WT	STYLE	PRICE
1½	131-015	12	6	M	\$33.62
2	131-020	12	6	M	\$36.57
2½	131-025	12	14	M	\$43.29
3	131-030	12	18	M	\$55.99
4	131-040	6	17	Fab	\$90.08
5	131-050	6	17	Fab	\$175.83
6	131-060	6	41	Fab	\$175.83

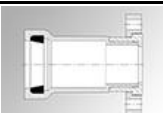
### PLAIN END x MALE NPT ADAPTER (PE x MNPT)



SIZE	PART NUMBER	CTN QTY	CTN WT	STYLE	PRICE
1½	133-015	12	3	Fab	\$18.46
2	133-020	12	3	M	\$24.82
2½	133-025	12	9	Fab	\$25.81
3	133-030	12	15	Fab	\$32.60
4	133-040	6	12	Fab	\$48.21
6	133-060	4	21	Fab	\$101.76

1½" - 4" adapters are also available in HARCO Ductile Iron

### GASKET x FLANGE ADAPTER (G x F)



SIZE	PART NUMBER	CTN QTY	CTN WT	STYLE	PRICE
1½	154-015	1	0.8	Fab	\$51.13
2	154-020	1	1.2	Fab	\$48.71
2½	154-025	1	1.7	Fab	\$103.21
3	154-030	1	2.4	Fab	\$99.33
4	154-040	1	6	Fab	\$212.75
6	154-060	1	12	Fab	\$337.92
8	154-080	1	20	Fab	\$478.15

### NON-PRESSURE WYE



(G x G x G)

SIZE	PART NUMBER	CTN QTY	CTN WT	STYLE	PRICE
3 x 3	101-0303	1	5	Fab	\$108.85
4 x 3	101-0403	4	15	M	\$138.07
4 x 4	101-0404	4	18.6	M	\$217.63
6 x 3	101-0603	4	27	M	\$240.92

#### STYLE LEGEND:

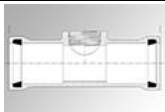
Fab	Fabricated using Sch40 PVC fitting with HARCO Spigot Adapters (or pipe) solvent-welded together (See pressure rating warning for "Fab Style".)
M	One-Piece Molded

# HARCO PRICE LIST

## PVC Gasketed Fittings for PVC IPS Pressure Pipe

### SERVICE TEE

Tapered NPT Thread  
(G x G x FNPT)

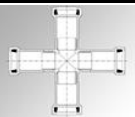


SIZE	PART NUMBER	CTN QTY	CTN WT	STYLE	PRICE
1½ x ¾	151-153	1	0.9	HB	\$52.23
1½ x 1	151-154	1	0.9	HB	\$52.23
1½ x 1¼	151-155	1	0.9	M	\$52.23
2 x ½	151-202	12	16	HB	\$40.73
2 x ¾	151-203	12	18	M	\$40.73
2 x 1	151-204	12	18	M	\$40.73
2 x 1¼	151-205	12	20	M	\$40.73
2 x 1½	151-206	12	20	M	\$40.73
2½ x ½	151-252	12	20	HB	\$54.45
2½ x ¾	151-253	12	20	HB	\$54.45
2½ x 1	151-254	12	27	M	\$54.45
2½ x 1¼	151-255	12	26	M	\$54.45
2½ x 1½	151-256	12	28	M	\$54.45
2½ x 2	151-258	12	25	M	\$54.45
3 x ½	151-302	12	36	HB	\$73.05
3 x ¾	151-303	12	33	HB	\$73.05
3 x 1	151-304	12	32	M	\$73.05
3 x 1¼	151-305	12	31	M	\$73.05
3 x 1½	151-306	12	31	M	\$73.05
3 x 2	151-308	12	30	M	\$81.88
4 x ½	151-402	8	32	HB	\$94.71
4 x ¾	151-403	8	32	HB	\$94.71
4 x 1	151-404	8	31	M	\$94.71
4 x 1¼	151-405	8	31	M	\$94.71
4 x 1½	151-406	8	31	M	\$94.71
4 x 2	151-408	8	30	M	\$94.71
6 x ½	151-602	6	45	HB	\$121.74
6 x ¾	151-603	6	37	HB	\$121.74
6 x 1	151-604	6	37	HB	\$121.74
6 x 1¼	151-605	6	43	M	\$121.74
6 x 1½	151-606	6	43	M	\$121.74
6 x 2	151-608	6	42	M	\$121.74

Last digit of Part Number denotes tap size in ¼" increments.  
8", 10" and 12" Service Tees available in HARCO Ductile Iron.

### CROSS

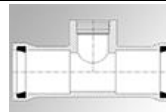
(G x G x G x G)



SIZE	PART NUMBER	CTN QTY	CTN WT	STYLE	PRICE
1½	172-015	1	1.7	Fab	\$104.18
2	172-020	1	2.6	Fab	\$126.64
2½	172-025	1	4	Fab	\$186.96
3	172-030	1	5.3	Fab	\$206.94
4	172-040	1	7	Fab	\$467.39

### ACME SERVICE TEE

315psi Pressure Rated  
(G x G x ACME)

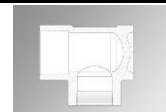


SIZE	PART NUMBER	CTN QTY	CTN WT	STYLE	PRICE
2 x 1	153-204	16	17	M	\$40.73
2 x 1¼	153-205	16	17	M	\$40.73
2 x 1½	153-206	16	17	M	\$40.73
2½ x 1	153-254	16	35	M	\$54.45
2½ x 1¼	153-255	16	29	M	\$54.45
2½ x 1½	153-256	16	24	M	\$54.45
3 x 1	153-304	16	44	M	\$73.05
3 x 1¼	153-305	16	43	M	\$73.05
3 x 1½	153-306	16	42	M	\$73.05

Outlet fits all brands of single O-Ring ACME inlet swing joints.  
2", 2½", 3" and 4" ACME service tees and ACME x NPT adapters are available in HARCO Ductile Iron.

### ACME S/O TAPT CAP

315psi Pressure Rated  
(H x ACME)



SIZE	PART NUMBER	CTN QTY	CTN WT	STYLE	PRICE
2 x 1½	147-206	16	13	M	\$16.78
2½ x 1½	147-256	16	19	M	\$25.69

### REPLACEMENT HARCO PRESSURE GASKET



SIZE	PART NUMBER	CTN QTY	CTN WT	STYLE	PRICE
1½	195-015	1	0.1	M	\$5.85
2	195-020	1	0.1	M	\$6.37
2½	195-025	1	0.1	M	\$8.28
3	195-030	1	0.1	M	\$11.65
4	195-040	1	0.2	M	\$16.52
6	195-060	1	0.3	M	\$21.92
8	195-080	1	0.3	M	\$26.78

Nitrile gaskets available for oil resistance; call for prices and availability

### STYLE LEGEND:

Fab	Fabricated using Sch40 PVC fitting with HARCO Spigot Adapters (or pipe) solvent-welded together (See pressure rating warning for "Fab Style".)
HB	One-Piece Molded, with outlet reduced by use of thread x thread bushing
M	One-Piece Molded

# HARCO PRICE LIST

## PVC Gasketed Fittings for PVC IPS Pressure Pipe

**WARNING:** Frequent or severe cyclical pressure surges (WATER HAMMER) can destroy PVC fittings. Where such conditions may exist, HARCO DEEP BELL DUCTILE IRON FITTINGS for IPS size PVC pipe should be considered. HARCO DEEP BELL DUCTILE IRON FITTINGS for IPS diameters are available in sizes 1½" through 12".

**Fab Style:** These fittings use Sch 40 PVC fittings. Sch 40 PVC fittings do not have a long term pressure rating. See section 6.3.2 of ASTM D2466. Use of these fittings in pressure systems is at user's risk.

**NOTE:** The use of anything but properly designed and installed thrust blocks or mechanical joint restraint products will reduce the life of plastic fittings. Thrust blocks must be of poured concrete only and sized for the soil conditions.





# HARCO PRICE LIST

## PVC Gasketed Fittings for PVC IPS Pressure Pipe

### Conditions of Sale

**RETURNS:** All returned merchandise must have authorization from Harco. Returned merchandise will only be accepted within one (1) year of the date of invoice. Merchandise must be in new and marketable condition. Freight charges on authorized returns must be prepaid and a restocking charge will be made except for returns resulting from shipping errors on our part or material proven to be defective.

**CLAIMS:** All claims for damage or shortage in transit shall be handled with the carrier by the consignee.

**LIMITED GUARANTEE:** The Harrington Corporation (Seller) guarantees to credit against invoice price or, at its option, to furnish, but not to install, replacement parts of like kind, F.O.B. Seller's manufacturing plant of origin, any item of its manufacture proved to be defective in material or workmanship within one (1) year from date of shipment provided Buyer (or Purchaser) gives immediate written notice of such alleged defect and, if required, returns defective item to Seller's Lynchburg, Virginia plant freight prepaid. Items or components not of Seller's manufacture are not included in the foregoing guarantee but are subject only to any warranty of their respective manufacturers. Seller shall not be liable for the cost of any repairs or work done or materials used by the Buyer because of defective or non-conforming items, unless authorized in writing by Seller. IN NO EVENT SHALL SELLER BE LIABLE FOR INCIDENTAL OR CONSEQUENTIAL DAMAGES CAUSED BY BREACH OF THIS GUARANTEE unless applicable federal or state law forbids exclusion of incidental or consequential damages.

**WARRANTIES:** EXCEPT FOR THE ABOVE "GUARANTEE," SELLER MAKES NO EXPRESS WARRANTIES AND NO IMPLIED WARRANTIES OF MERCHANTABILITY OR FITNESS FOR ANY PARTICULAR PURPOSE AS TO PRODUCTS SOLD BY US, UNLESS APPLICABLE FEDERAL OR STATE LAW FORBIDS SUCH DISCLAIMER OF WARRANTIES. TO THE EXTENT THAT APPLICABLE FEDERAL OR STATE LAW FORBIDS THE DISCLAIMER OF IMPLIED WARRANTIES OF MERCHANTABILITY OR FITNESS FOR ANY PARTICULAR PURPOSE, SUCH IMPLIED WARRANTIES ARE LIMITED TO THE SAME DURATION (ONE YEAR) AS SELLER'S ABOVE GUARANTEE. NO WAIVER, ALTERATION, OR MODIFICATION OF THIS DISCLAIMER OF WARRANTIES SHALL BE VALID UNLESS MADE IN WRITING AND SIGNED BY AN EXECUTIVE OFFICER OF SELLER.

**PRICES:** Subject to change without notice. Possession of price sheets does not constitute an obligation to sell and orders may be refused without cause.

**SUITABILITY:** Contact with corrosive soils or carried water may require the use of protective measures for metallic components. It is the responsibility of the Buyer to determine both the need for protective measures and type of protective measures required. Buyer is solely responsible for the effectiveness of protective measures used.



**ENGINEERED FOR DURABILITY**